

Luc Dondeyne
galerie Transit



I

In Eden, 110 x 160 cm, 2009

No Border, 80 x 100 cm, 2009





Day Dream I, 76 x 65 cm, 2008 | Day Dream II, 120 x 100 cm, 2009



Territory, 120 x 120 cm, 2009





Backstage, 95 x 65 cm, 2008 | Split Second, 120 x 80 cm, 2009



Let The Fantasy Grow, 80 x 60 cm, 2008





Salvation Army, 35 x 55 cm, 2006 | Sea Mania, 71 x 48 cm, 2007





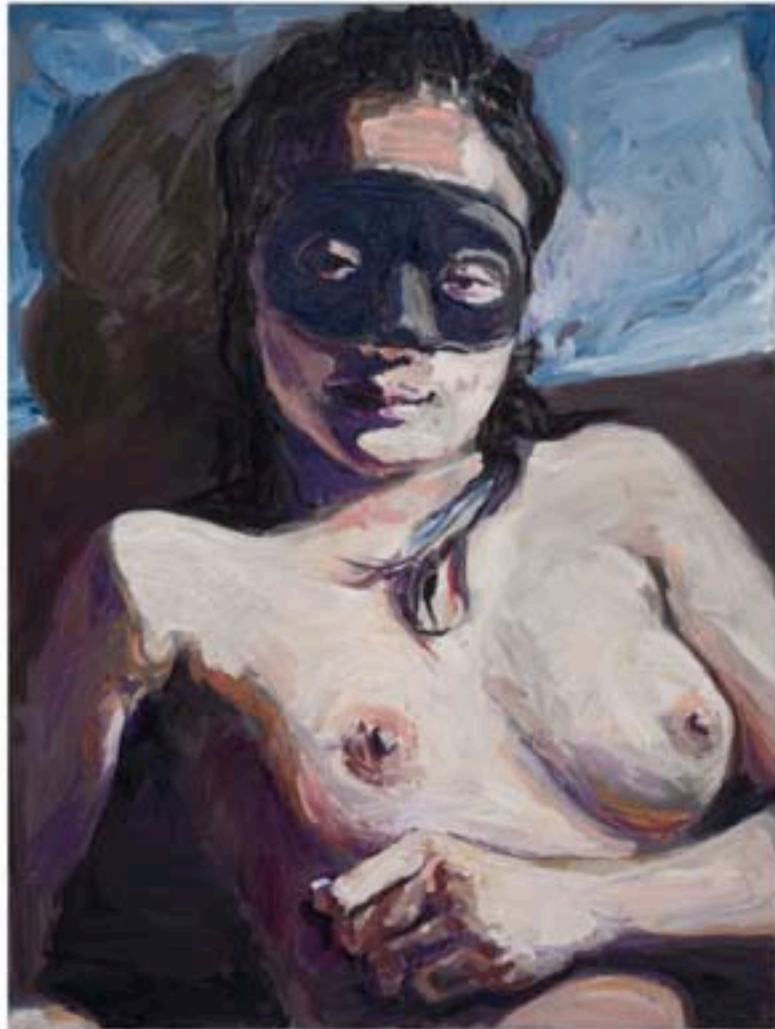
Melting Pot, 65 x 95 cm, 2009 | Mind the Gap, 120 x 100 cm, 2007 [detail]





Beëlzebub, 48 x 41 cm, 2008 | Portable Smile, 145 x 126 cm, 2008





Nolooker, 64 x 48 cm, 2009 | On Shore, 99 x 41 cm, 2007







Image Building, 162 x 56 cm, 2008 | Point de Lendemain, 65 x 95 cm, 2007



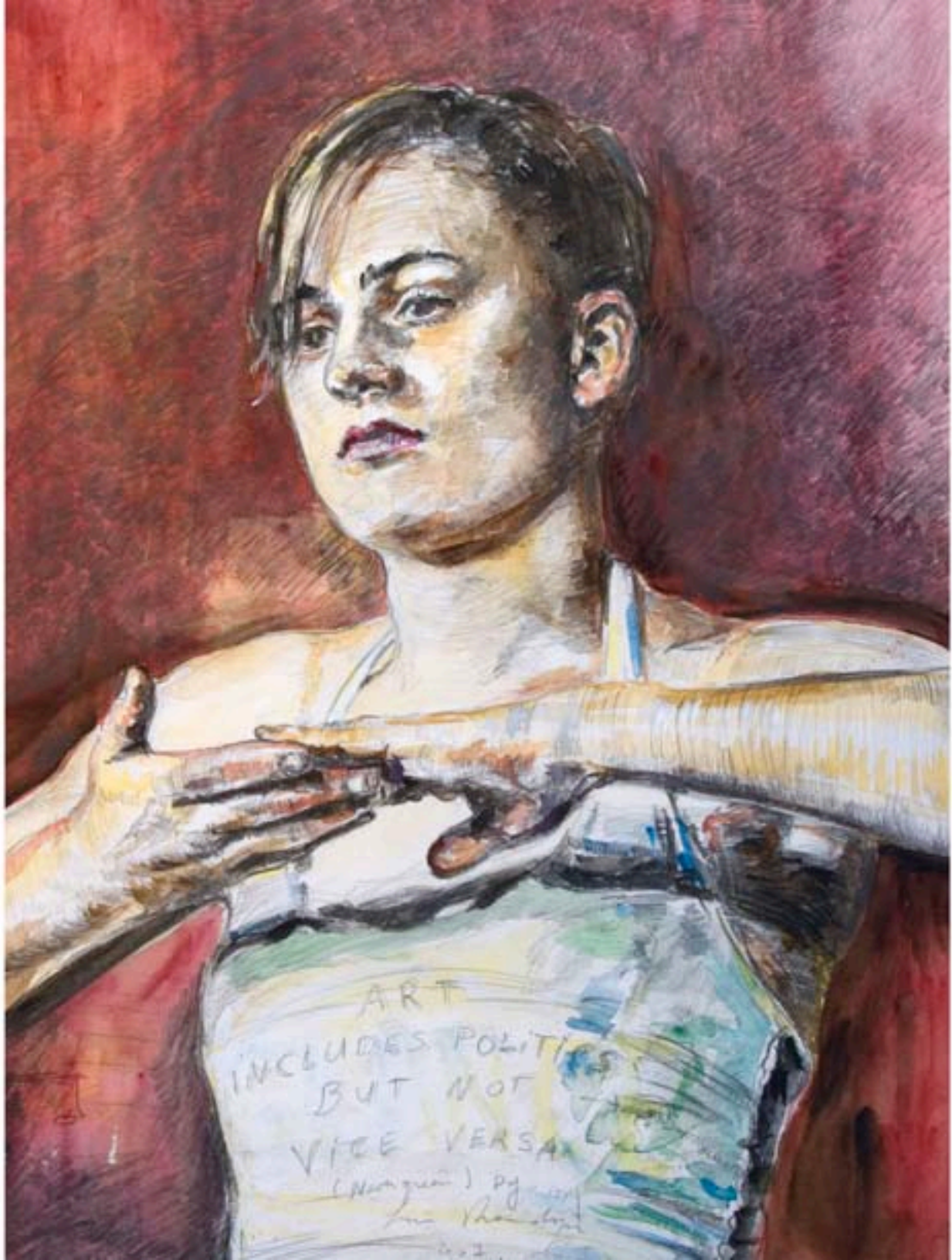


Trial by Error, 120 x 80 cm, 2008 | Intermission, 80 x 120 cm, 2008



Spoetnik I, 142 x 81 cm, 2007 | Inside Out, 120 x 120 cm, 2007







Vice Versa, 40 x 32 cm, 2007, drawing | Fancy Footwork, 61 x 95 cm, 2007



Dog's Fusion, 121 x 101 cm, 2007 | Balancing, 34 x 50 cm, 2008, drawing



Study for "BALANCING" (a discernible point between opposite forces) in black 2008



The Residence, 77 x 64 cm, 2008 | Free Lance, 80 x 60 cm, 2007



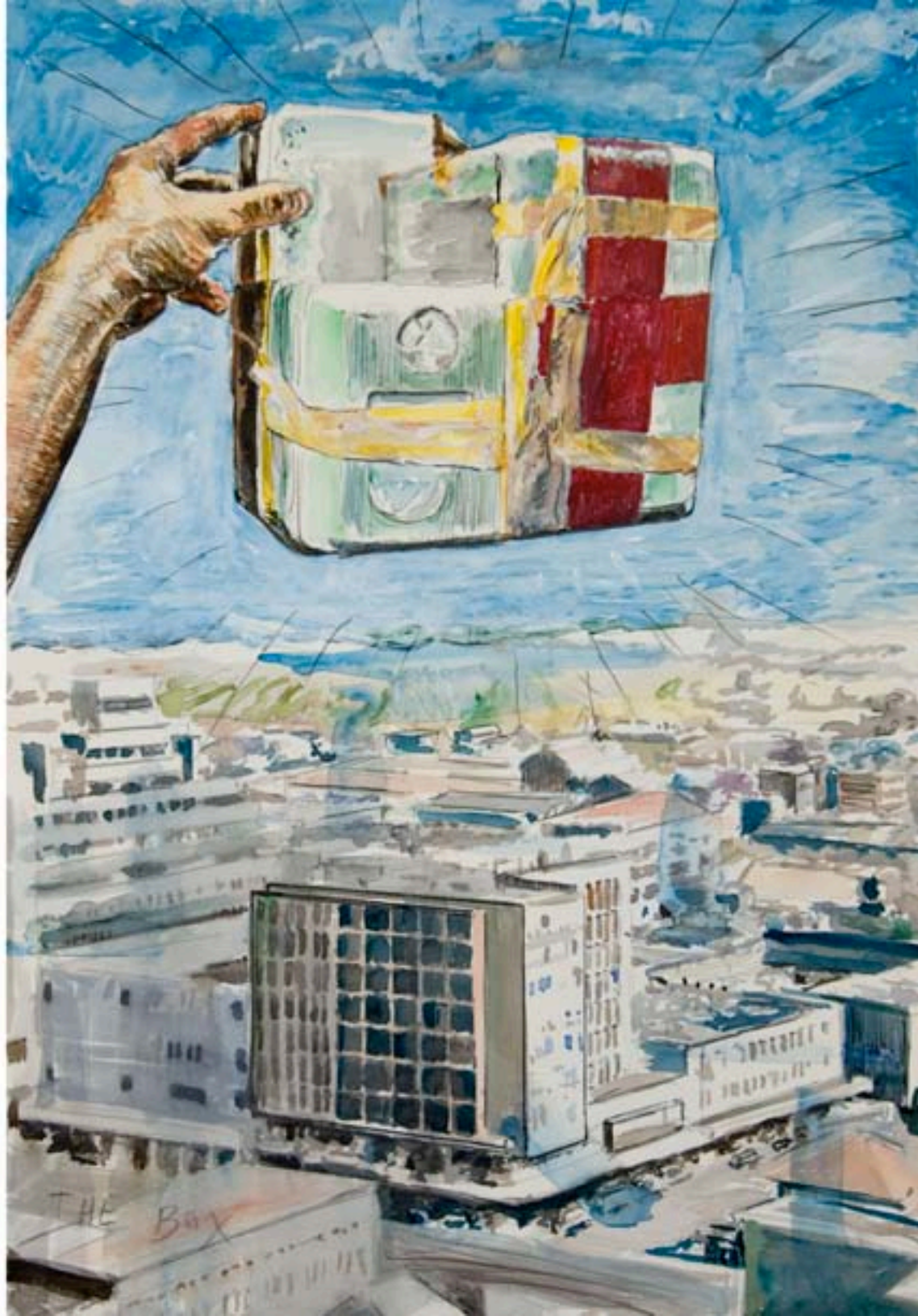


Making the best of a bad job, 55 x 30 cm, 2007, drawing | Les Deux Besoins, 32 x 28 cm, 2008, drawing





See And Act, 47 x 32 cm, drawing | The Box, 47 x 32 cm, drawing





Voice-Over, 120 x 90 cm, 2008, drawing | Corrigier La Fortune, 120 x 90 cm, 2008, drawing





A Monologue, 56 x 36 cm, 2009, drawing



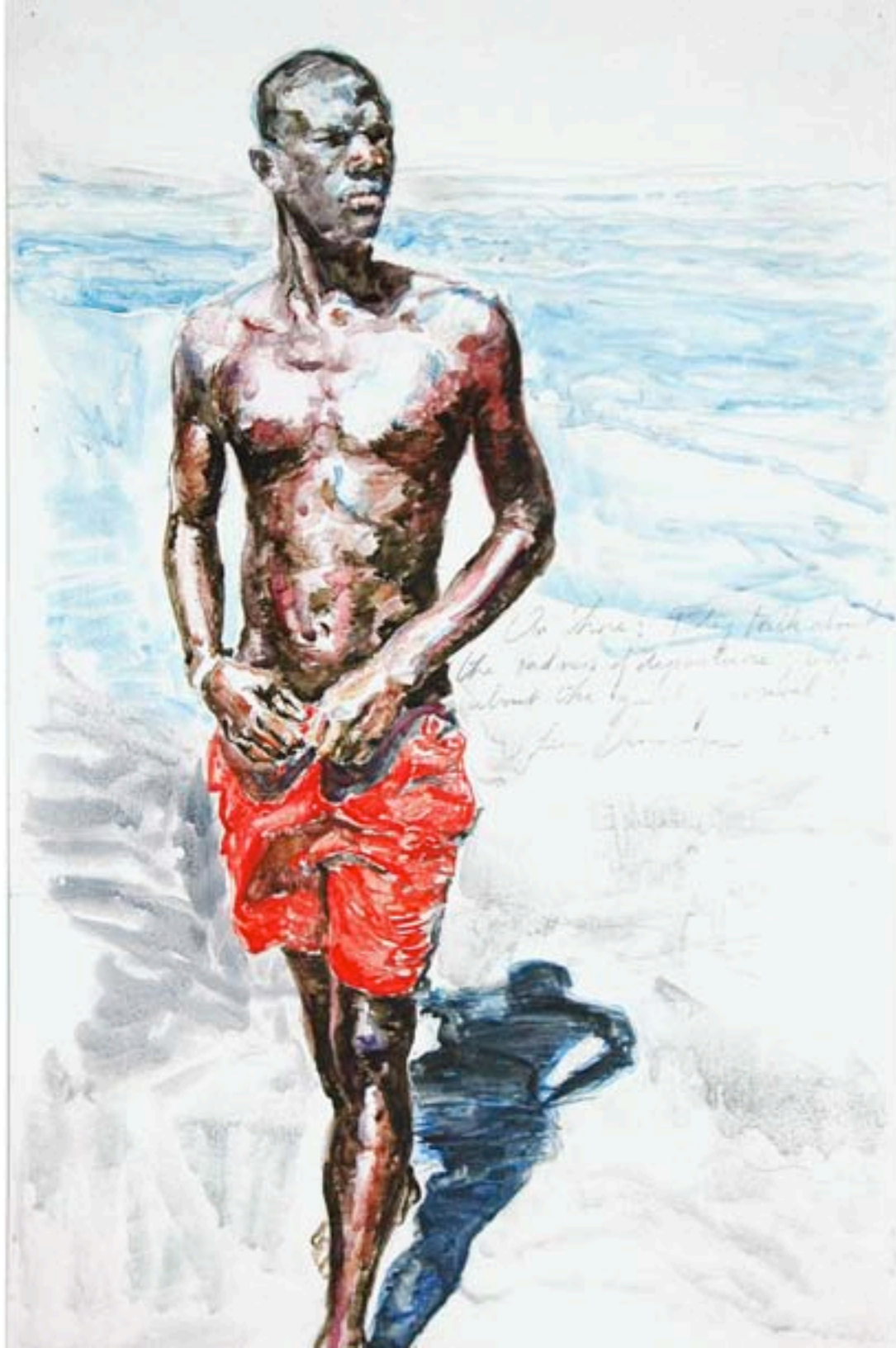
Blickpunkt, 34 x 50 cm, 2008, drawing



DEEP IMAGE



Deep Image, 48 x 35 cm, 2007, drawing | Universe, 15 x 21 cm, 2002, drawing



In here: they talk about
the sadness of departure, and
about the guilt of what
is done here